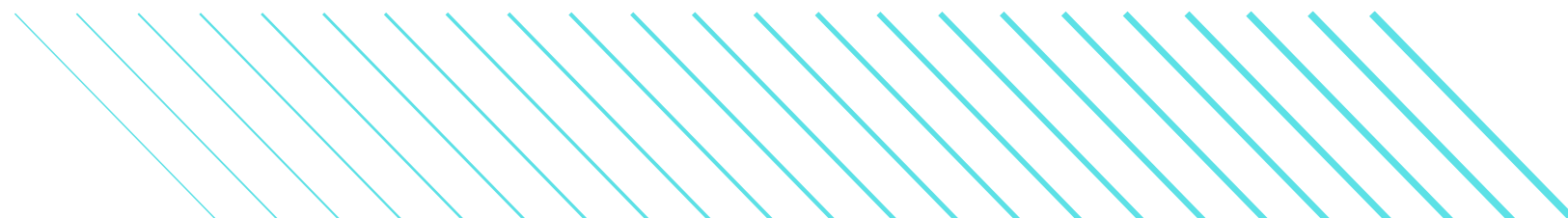
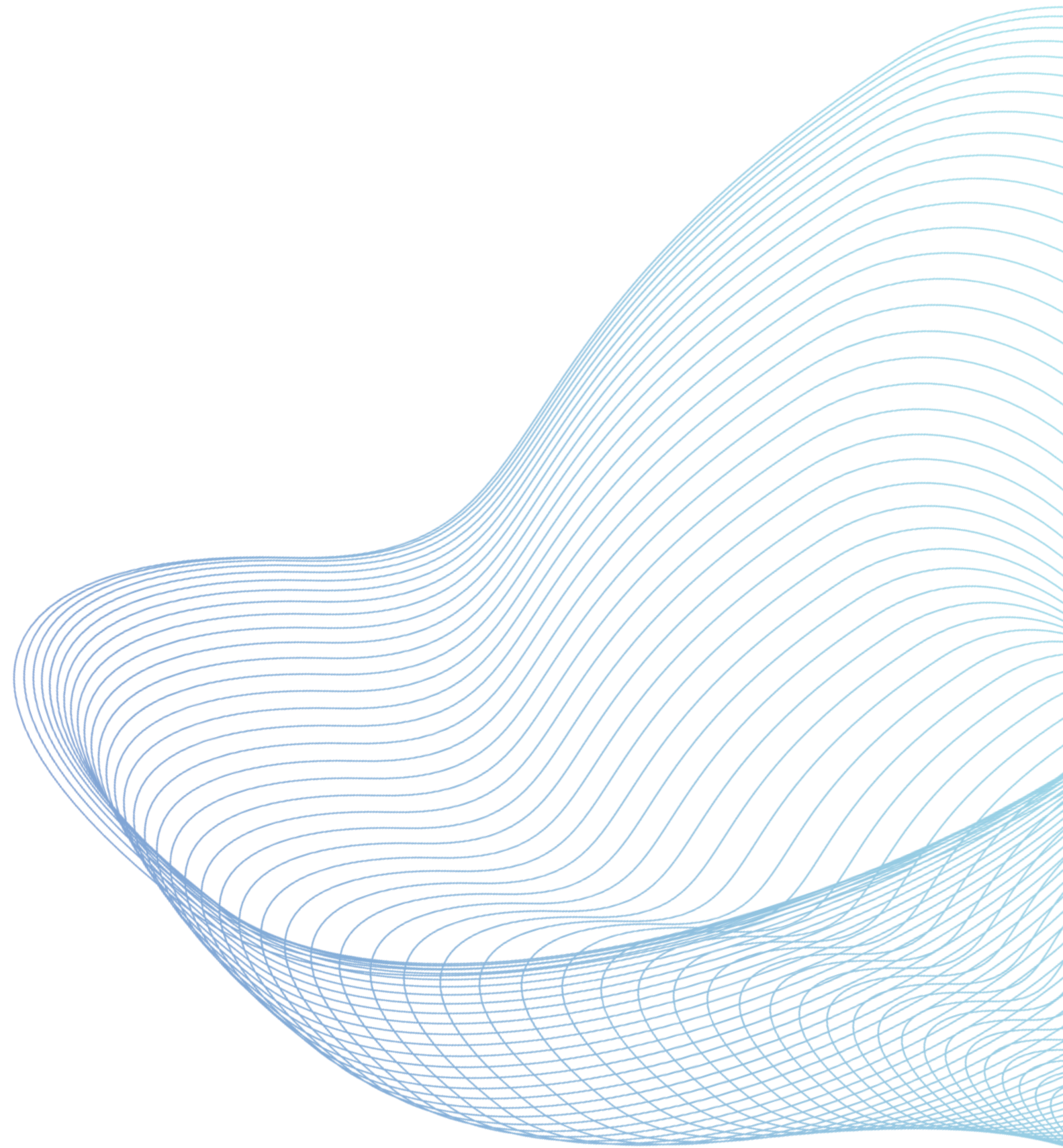




COMPANY PROFILE



PRODUCTS AND SERVICES

Discover excellence with Paras Hydrotech Pvt Ltd, your go-to-source for cutting-edge water treatment solutions. Headquartered in Chandigarh with a dedicated workshop in Mohali, we have been a reliable force in the industry since April '95. At Paras Hydrotech, our passion is to provide high-quality solutions tailored to meet the diverse needs of our valued clients.

- **Zero Liquid Discharge (ZLD) Plants**

- Multiple Effect Evaporators (MEE)
- Agitated Thin Film Dryer (ATFD)

- **Effluent & Sewage Treatment Plants**

- Conventional ETP and STP Systems
- High Efficiency ETP equipment

- **Wide Range of Chemicals for all Water Treatment Applications**

- **Sludge Handling Solutions**

- Sludge Dewatering Machine
- Paddle Dryer

- **Advanced Filtration Systems**

- Ultra-Filtration
- Nano-Filtration
- Reverse-Osmosis Systems



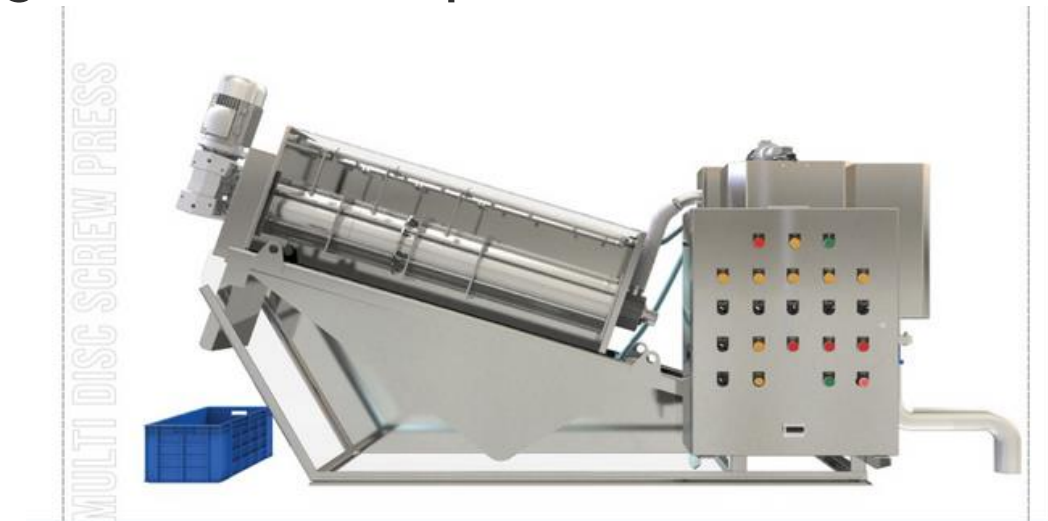
SLUDGE HANDLING SYSTEMS

These machines can be used to make the process of sludge disposal easier by reducing their moisture content, thereby reducing the total sludge volume.

1

Sludge Dewatering Machine

This machine can be used to eliminate thickening tank and sludge processes all in one single continuous operation.



2

Sludge Dryers

These machines are highly efficient, mechanically agitated, and indirectly heating by steam or thermic fluid



ADVANCED FILTRATION

The ability of membranes to separate tiny components like salts and ions from a liquid sets them apart from other types of filtering media, such as clay, silt, and sand, which are all used to clean water.



Ultrafiltration

Particles of a size of 0.001-0.1 μ m are removed using ultra-filtration membranes.

Nanofiltration

Low molecular weight particles are partially held in the membrane by particles with a size of 0.1 nm to 0.001 μ m

Reverse-Osmosis

The pore size of a reverse osmosis filter is about 0.0001 micron. Reverse osmosis systems are particularly successful at getting rid of bacteria like *Campylobacter*, *Salmonella*, *Shigella*, and *E. coli*.

Zero Liquid Discharge (ZLD) Plants

These plants are advanced wastewater treatment facilities designed to eliminate liquid discharge by recovering and reusing all water within a system. The process involves concentrating wastewater through evaporation and crystallization, producing solid salts for disposal while recovering purified water for reuse.

MEE & ATFD



The MEE (Multiple Effect Evaporation) combined with ATFD (Agitated Thin Film Dryer) system is an innovative solution for efficient and cost-effective wastewater treatment and resource recovery

MVR



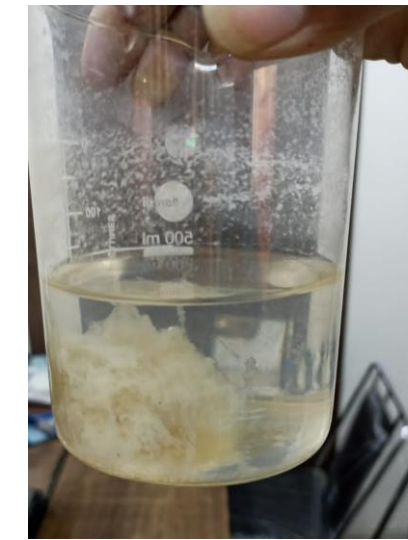
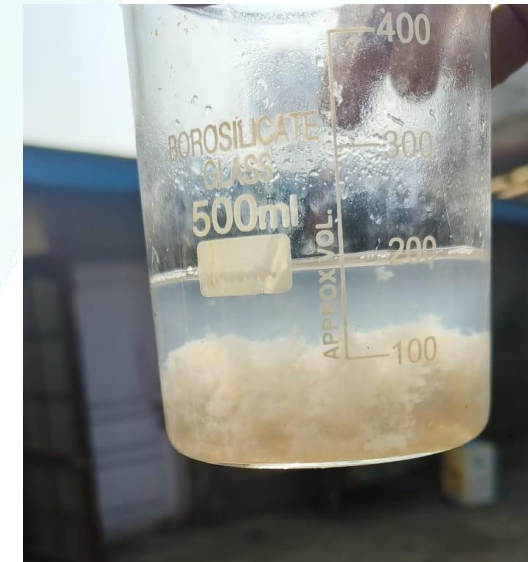
Mechanical Vapor Recompression (MVR) is a process that efficiently evaporates water from industrial wastewater streams while minimizing energy consumption.

Specialized Coagulants and Flocculants

Coagulants and flocculants are essential chemicals in water treatment processes, aiding in the removal of impurities.

Together, coagulants and flocculants improve the efficiency of sedimentation and filtration processes in wastewater treatment and drinking water purification.

These chemicals play a vital role in achieving clearer, cleaner water by promoting the separation of contaminants for subsequent removal.



Improve Settling



Color Removal

FEW OF OUR INSTALLATIONS

Zero Liquid Discharge Clients :

- Hero Motocorp Ltd.
- Kajaria Bathware Pvt Ltd.
- KEI Industries Ltd.
- Global Pharma Healthcare Pvt. Ltd.
- India Japan Lighting Pvt Ltd. (Takenaka Corporation)

ETP and STP Clients :

- Vardhman Textiles Ltd.
- Ludhiana Beverages Pvt Ltd.
- Arihant Spinning
- BONN Bread
- Ambuja Cement

Sludge Handling Solution Clients :

- Hindustan Coca Cola Beverages Pvt Ltd
- Ludhiana Beverages Pvt Ltd.
- Pidilite Industries Ltd.
- Century Plywood
- Adler Wood India Pvt Ltd

Advanced Filtration System Clients:

- Pepsi Food Ltd.
- Crompton Greaves
- Dell International Service
- Ludhiana Beverages Pvt Ltd Unit 1
- Pizza Hut

GET IN TOUCH WITH US!

+91 9888000391

info@parashydrotech.com

ParasHydrotech.com

